

### Standard Equipment

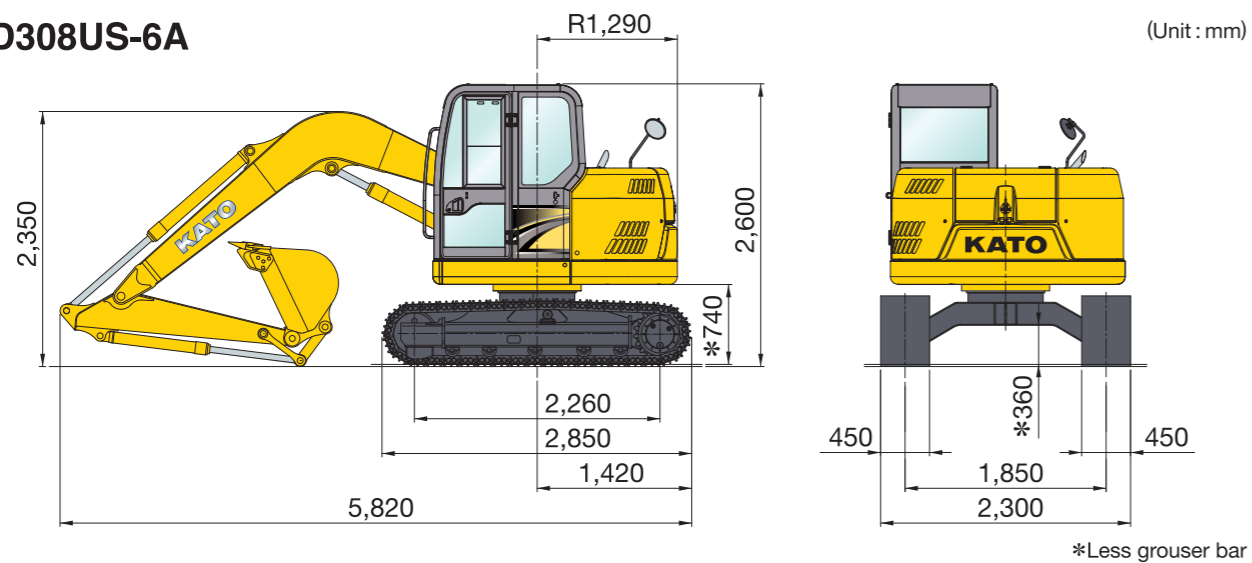
- COLOR MONITOR DISPLAY (APC300)
- SEAT-BELT
- AUTOMATIC AIR CONDITIONER (PRESSURIZED)
- INTERMITTENT WINDSHIELD WIPER
- EMERGENCY ESCAPE HAMMER
- AM/FM RADIO (2 SPEAKERS)
- DUAL CORN SPEAKER × 2
- CABIN LIGHT
- 3 STD WORKING LIGHTS (FRONT RIGHT SIDE, BOOM-L, CAB-L)
- TAIL VIEW MIRROR
- WORKING MODE SELECTOR (APC300)
- AUTO-SLOW, ONE TOUCH SLOW
- AUTOMATIC PARKING BRAKE (TRAVELING)
- SERVICE PORT (1 SPOOL)
- AIR CLEANER DOUBLE ELEMENT
- EMERGENCY SWITCH TO STOP ENGINE
- BOOM / ARM ANTI-DRIFT VALVE
- SLEWING ANTI-COUNTER ACTION
- TOOL SET
- GREASE GUN
- HYDRAULIC LOCK LEVER

### Optional Equipment

- OPTIONAL WORKING LIGHT (BOOM-R)
- OPTIONAL WORKING LIGHT (CAB-R)
- UNDER COVER SLEWING TABLE (THICKER)
- OPTION PIPING
- BOOSTING CIRCUIT FOR CRUSHER
- MULTI-LEVER
- WINDSHIELD HALF SIZE GUARD
- WINDSHIELD FULL SIZE GUARD
- CABIN GUARD
- REAR VIEW MIRROR-R
- REAR VIEW MIRROR-L
- ELECTRIC HORN
- SLEWING WARNING LAMP
- BUZZER TRAVELING
- ELECTRIC REFUELING PUMP
- FIRE EXTINGUISHER
- HOSE RUPTURE VALVE (FOR BOOM CYLINDERS)
- HOSE RUPTURE VALVE (FOR ARM CYLINDER)
- TRACK GUARD (1 PCS EACH SIDE)
- TRACK GUARD (2 PCS EACH SIDE)
- OPTIONAL WEIGHT (+500kg)
- RELIEF VALVE FOR BREAKER
- REAR VIEW MONITOR

### Dimensions

#### HD308US-6A



<http://www.kato-works.co.jp>

NOTE : Illustrations may include optional equipment. KATO products and specifications are subject to improvements and changes without notice. Mentioned figures are approximate.

● Contact for enquiry:

**KATO**

QUALITY & EXPERIENCE  
SINCE 1895

### KATO WORKS CO.,LTD.

9-37, Higashi-ohi 1-chome, Shinagawa-ku, Tokyo 140-0011, Japan.  
Tel. : Head Office Tokyo(03)3458-1111  
Overseas Marketing Department Tokyo(03)3458-1115  
Fax. : Tokyo(03)3458-1163

C04241  
4.2016-500(FB)1  
6.2018-500(SY)1-3-2 Printed in Japan

# REGZM

## FULLY HYDRAULIC EXCAVATOR

# HD308US-6A

Bucket capacity : 0.12m<sup>3</sup>-0.34m<sup>3</sup> (ISO)  
Engine output : 41.0kW/2,000min<sup>-1</sup> (ISO 9249 Net)  
Operating weight : 7,300kg







## Environment-friendly & User-friendly Compact tail KATO excavator

**REGZM**



### Reliable and clean ISUZU engine is adopted

- Model : ISUZU CP-4LE2X (Tier 4).  
Saves the fuel consumption, inject optimum amount of fuel by the common rail system. Reduces more NOx by the large capacity intercooler and turbo charged EGR system.

### DOC is installed

- DOC (Diesel Oxidation Catalyst) reduces HC and CO.

### Fuel efficiency up approximately 11%

- With the latest APC300, fuel efficiency increased approximately by 11% compared to previous model at "A mode" (All-round mode).

### Safe cabin

- Enhances operator's safety by Top Guard complying with ISO 10262 (Top Guard level I without cabin guard) and Roll Over Protection Structure (ROPS).

### Compact tail swing model

- Tail swing radius is 1,290mm.  
Minimum front swing radius is 1,630mm.  
Advantage in narrow working site.

### Powerful digging force

- Maximum bucket digging force is 61.4 kN.  
Maximum arm digging force is 42.2kN.

※Dozer is option





## Easy to maintain by user-friendly design



▲ Easy access to the fuel filter and the engine oil filter.



▲ Parallel configuration oil cooler and radiator make maintenance easier.



▲ The one touch cock enables to discharge oil without staining hand or using tool.



▲ Powerful double element for the air cleaner.

## Latest APC300 with various functions



- Able to set maintenance term for filter and oil.
- Hour meter function is adopted.
- "P mode" (Pro Mode) is adopted. P, A and E mode operation method are selectable
- Emergency backup switch is equipped for in case of APC malfunction.

### P Mode

Pro mode established both power and good response.

### A Mode

All-round mode is ideal for general operation.

### E Mode

ECO mode for economical works.

### Auto-slow mode

Auto-slow mode controls the engine to idle engine speed automatically and save the fuel consumption.



## Roomy and comfortable cabin

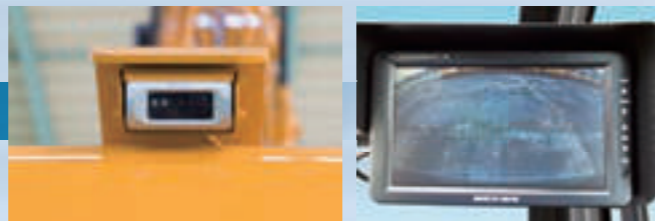


◀ The hour meter can be checked even when key is turned off.

APC monitor  
Switch panel  
Defroster  
Drink holder

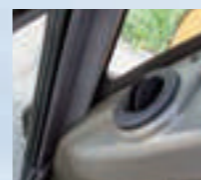
Tool box

FM/AM radio /  
switch panel for air conditioner



## Rear view camera (option)

- Operator can monitor rear view by the rear view camera.



▲ Defroster



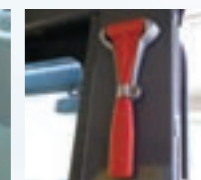
▲ Switch panel



▲ Drink holder



▲ Tool box



▲ Emergency escape hammer



▲ FM/AM radio / switch panel for air conditioner



# Technical Specifications

## ENGINE

Model..... ISUZU CP-4LE2X  
 4 cycle intercooler turbo charged diesel engine  
 Number of cylinders..... 4  
 Bore & Stroke..... 85.0mm×96.0mm  
 Total displacement..... 2.179 L  
 Rated output..... 43.0kW/2,000min<sup>-1</sup>  
 (ISO 14396)  
 41.0kW/2,000min<sup>-1</sup>  
 (ISO 9249 Net)  
 Max. torque..... 215N·m/1,800min<sup>-1</sup>  
 (ISO 14396)  
 207N·m/1,800min<sup>-1</sup>  
 (ISO 9249 Net)  
 Compression ratio..... 17.6:1  
 Combustion system..... Direct injection  
 Specific fuel consumption..... 225±7g/kW-hour  
 Cooling system..... Pressurized water circulated by a centrifugal pump with thermostat  
 Lubrication system..... Pressurized oil fed by a gear pump through full-flow and by-pass cartridge filter  
 Starter..... Electric, 24V-3.2kW  
 Generator..... Alternator, 24V-50A  
 Governor..... Electronic  
 Air cleaner..... Dry type filter

## HYDRAULIC SYSTEM

Pumps..... Double variable piston pump and gear pump  
 Max. discharge flow..... 2×74.0L/min  
 Max. discharge pressure..... 29.4MPa  
 Max. discharge pressure (travel circuit only)..... 31.4MPa  
 Oil filtration..... Full-flow filter with replaceable element, a pilot line filter and suction strainer  
 Control valves..... 5+4 section multiple control valves (with one free service circuit)  
 Pilot pump..... Gear type  
 Oil cooler..... Finned tube, forced ventilation  
 Pressure relief valves..... Primary and secondary on each circuit

## SWING SYSTEM

Drive..... Axial piston motor with shockless valve and reduction gear.  
 Brake..... A mechanical parking brake which is applied when the safety lock lever is pulled backwards, the engine is turned off or the swing control lever is in the neutral position.  
 Lubrication..... Completely housed and grease bathed  
 Max. swing speed..... 10.0min<sup>-1</sup>  
 Tail swing radius..... 1,290mm  
 Min. front swing radius..... 1,630mm

## TRAVEL SYSTEM

Drive..... Independent axial piston motor with reduction for each side  
 Brakes..... Independent disk parking brake for each side, applied automatically when the travel levers are in the neutral position.  
 Track shoes..... 39 each side  
 Track adjustment..... Grease cylinders with recoil springs  
 Lubrication..... Sealed-for-life rollers and front idlers with floating seals  
 Travel speed..... High 0~5.0km/h  
 Low 0~3.2km/h  
 Gradeability..... 70% (35°)  
 Max. drawbar pull..... 66.9kN  
 Ground clearance..... 360mm (less grouser bar)  
 Track length..... 2,850mm

## BOOM, ARM AND BUCKET

Boom cylinder..... One, double acting  
 Bore & Stroke..... 105mm×960mm  
 Arm cylinder..... One, double acting  
 Bore & Stroke..... 95mm×920mm  
 Bucket cylinder..... One, double acting  
 Bore & Stroke..... 85mm×745mm  
 Lubrication..... Grease nipples, with centralized greasing for remote points  
 Bucket digging force..... 61.4kN (6,300kgf)  
 Arm digging force..... 42.2kN (4,300kgf)

## SERVICE DATA

Fuel tank..... 120 L  
 Cooling system..... 12.5 L  
 Engine oil..... 10.7 L  
 Track drives..... 2×1.3 L  
 Hydraulic oil tank (level)..... 51 L (system)..... 98 L  
 In standard figure, with the 1.62m arm, 450mm grouser shoes and 0.28m<sup>3</sup> (ISO), bucket.  
 Operating weight..... 7,300kg  
 Ground pressure..... 32kPa

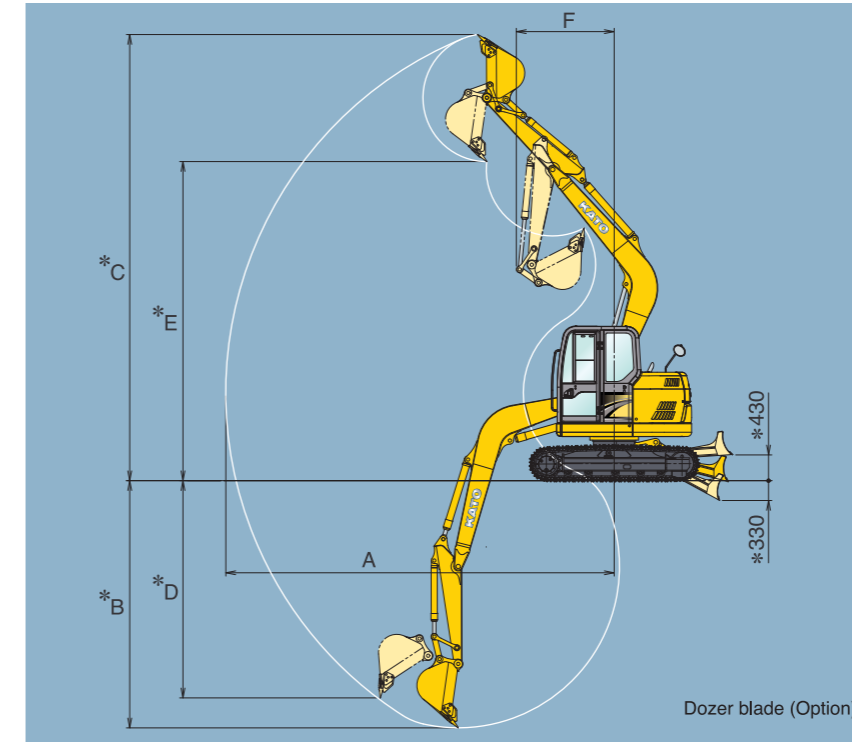
## CAB & CONTROLS

Type..... All weather sound suppressed, cab mounted on 4 point viscous mounting.  
 Right hand levers..... Controls the boom & bucket  
 Inner right hand lever (with foot pedal)..... Controls the right hand track  
 Inner left hand lever (with foot pedal)..... Controls the left hand track  
 Left hand lever..... Controls the arm & swing  
 Pilot control..... Travel, boom, arm, bucket and swing  
 Engine throttle..... Electric "Accell dial"  
 Meter & gauges..... Hour meter, water temperature and fuel level  
 Working lights..... Provided on the boom left side and right front cover and cab left side  
 Lubrication chart..... Inside of the right front side cover

## APC300

- Quick Selection of Working Modes
- P: Professional mode for experienced operator. Established both power and good response
- A: All-round Multi Purpose Mode for all application from precision work to heavy duty work by stroke of operation levers
- E: ECO Mode for economical works
- Color monitor display with back up light
- Engine oil pressure
- Hydraulic oil filter
- Engine preheater
- Hydraulic oil temperature
- Water temperature
- Water level
- Fuel level
- Battery charge
- Air cleaner
- Calendar
- Hour meter

# Working Ranges

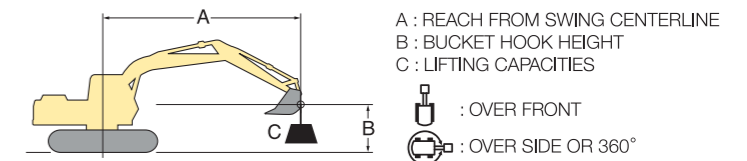


Unit : mm

Range	Arm (1.62m)	Long Arm (2.07m)
A : Max. digging radius	6,470	6,910
*B : Max. digging depth	4,120	4,570
*C : Max. digging height	7,430	7,800
*D : Max. vertical wall	3,620	4,140
*E : Max. dumping height	5,320	5,680
F : Min. swing radius	1,630	2,010

\* Less grouser bar.

# Lifting Capacities



**HD308US-6A** BOOM: 3.83m, ARM: 1.62m, BUCKET: 0.28m<sup>3</sup> (230kg), SHOE WIDTH: 450mm, COUNTERWEIGHT: 1,060kg Unit: 1,000kg

LOAD POINT HEIGHT B (m)	OUTREACH A (m)						RATING AT MAXIMUM REACH		
	2.00		3.00		4.00		5.00		m
5.00			*1.35	*1.35					
4.00			*1.56	*1.56	*1.48	*1.48			
3.00	*2.85	*2.85	*2.03	*2.03	*1.70	1.52	1.26	1.02	1.09 0.88 5.39
2.00			*2.64	2.28	1.77	1.43	1.22	0.98	1.00 0.80 5.58
1.00			2.68	2.10	1.68	1.34	1.17	0.94	0.97 0.78 5.58
0.00	*3.06	*3.06	2.58	2.01	1.62	1.29	1.14	0.91	1.01 0.80 5.40
-1.00	*3.10	*3.10	2.56	1.99	1.59	1.26	1.13	0.90	1.13 0.90 5.01
-2.00	*3.09	*3.09	2.59	2.02	1.61	1.28			1.42 1.13 4.36
-3.00	*3.20	*3.20	*2.24	2.11					*1.98 1.83 3.29

**HD308US-6A** BOOM: 3.83m, ARM: 2.07m, BUCKET: 0.22m<sup>3</sup> (210kg), SHOE WIDTH: 450mm, COUNTERWEIGHT: 1,060kg Unit: 1,000kg

LOAD POINT HEIGHT B (m)	OUTREACH A (m)						RATING AT MAXIMUM REACH			
	2.00		3.00		4.00		5.00		6.00	
6.00										
5.00					*1.18	*1.18				
4.00					*1.27	*1.27	*1.29	1.08		
3.00			*1.69	*1.69	*1.49	*1.49	1.29	1.05		0.94 0.76 5.89
2.00	*3.72	*3.72	*2.33	*2.33	*1.80	1.46	1.23	1.00	0.89	0.71 0.87 0.69 6.06
1.00	*2.53	*2.53	2.73	2.15	1.70	1.36	1.18	0.95	0.86	0.68 0.85 0.67 6.06
0.00	*2.92	*2.92	2.60	2.03	1.62	1.29	1.14	0.90		0.87 0.69 5.89
-1.00	*3.02	*3.02	2.54	1.98	1.58	1.25	1.11	0.88		0.95 0.75 5.54
-2.00	*3.07	*3.07	2.55	1.98	1.58	1.25				1.14 0.90 4.96
-3.00	*3.28	*3.28	2.61	2.04	1.63	1.30				1.60 1.27 4.06

- NOTE: 1. The lifting capacities are based on ISO 10567.  
 2. The lifting capacities shown do not exceed 87% of machine hydraulic capacity or 75% of minimum tipping load.  
 3. The capacities marked with an asterisk (\*) are limited by hydraulic capacities.  
 4. The lifting capacities are based on machine standing on firm, uniform supporting surface. User must make allowances for job conditions such as soft or uneven ground.  
 5. The lifting capacities shown should not be exceeded. Weight of all lifting accessories must be deducted from the above lifting capacities.  
 6. The capacities apply only to the machine as originally manufactured and equipped by KATO WORKS CO., LTD.  
 7. The operator should be fully acquainted with the Operation Manual before operating the machine.

## Bucket

Type of bucket	Backhoe bucket					
Bucket capacity m <sup>3</sup> , ISO	0.12	0.16	0.22	0.28	0.34	
Bucket width	W/O side cutters, mm	370	440	555	650	770
	with side cutters, mm	480	555	670	770	890
Bucket weight kg	170	190	210	230	250	
Number of bucket teeth	3	3	3	4	4	
Shape of bucket						
Standard boom +	Standard arm	●	●	●	●	▲
	Long arm	●	●	●	▲	×

● General purpose ▲ Light work × Unusable ● Yellow colored area means standard.

## Track Shoes

Type of shoes	Pad crawler		Grouser shoe	
Shoe width mm	450	450	450	600
Distance between shoe edge of both side mm	2,300	2,300	2,300	2,450
Ground pressure kPa	32 (0.33)	32 (0.33)	32 (0.33)	25 (0.25)
Net weight change kg	± 0	S.T.D		+100

● Yellow colored area means standard.